

Lost?

THE EASTERLING Colour Supplement 2010

www.eawa.co.uk

e-mail: eawa.ivan@btinternet.com



Icklingham Lock & King's Stauch,
River Lark

IC



IC



IC



IC



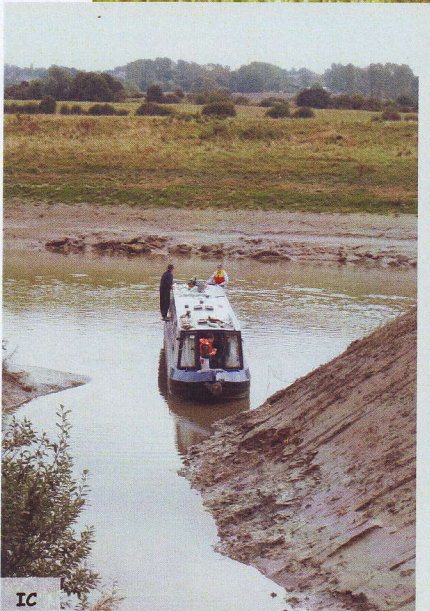
IC

Halesworth Town Lock, River Blyth

Challenges



NL

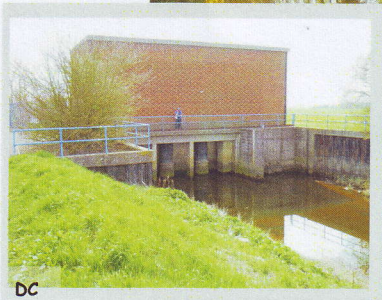


IC

Welches Dam & the Old Bedford



DC



DC

Linking the Black Sluice & River Glen



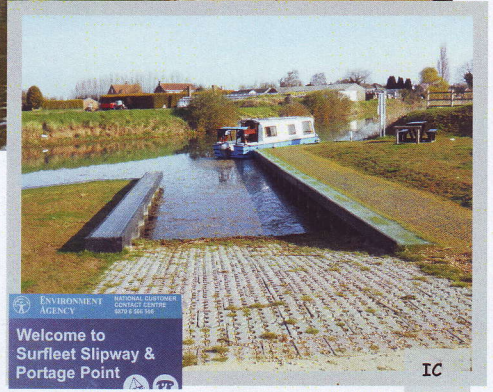
DC

Progress: 43+ miles re-opened

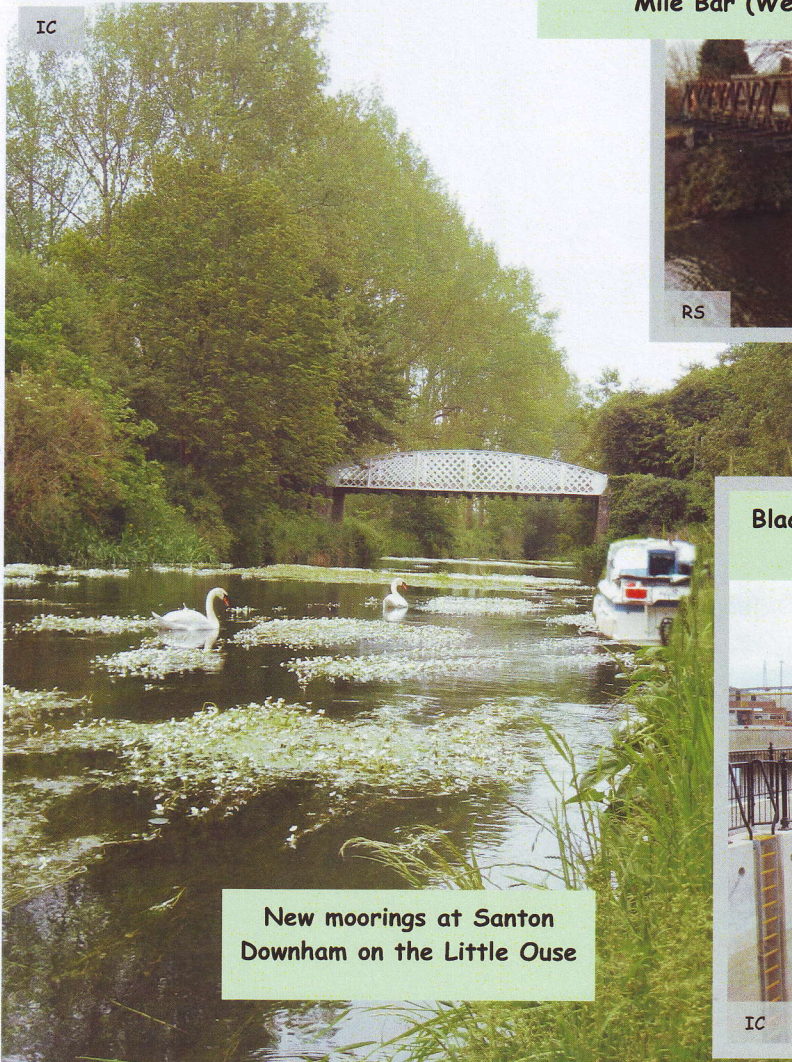
DP



New slipways at Crowland (Welland), Surfleet (Glen) and above, at Sleaford on the Slea - ready for the opening of the town river in July.



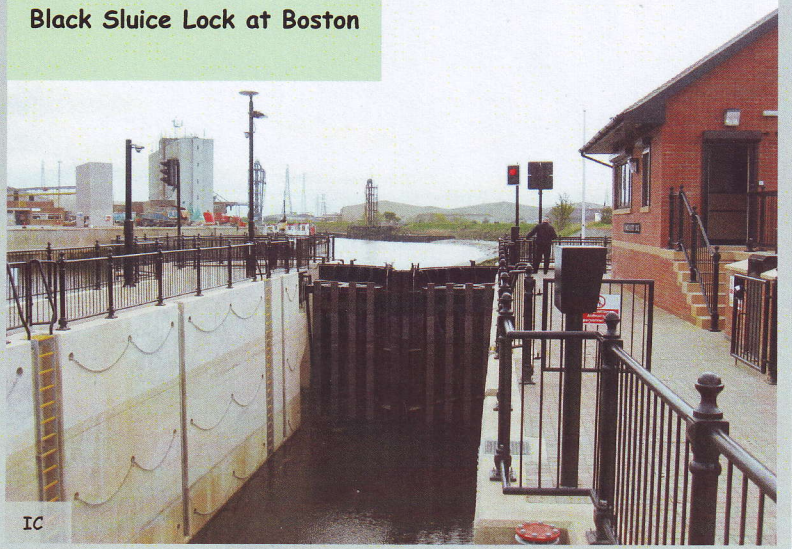
Raised bridges at Ramsey Hollow (Forty Foot) and Four Mile Bar (Welland)



New moorings at Santon Downham on the Little Ouse



Black Sluice Lock at Boston

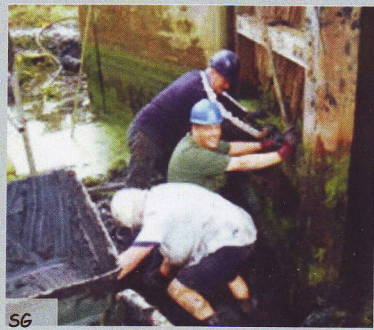


Progress restoration

Stratford St Mary (Stour)



IC



SG

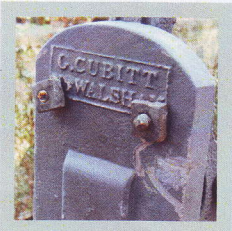


IC

Baylham (Gipping)



SG



DC



IC

Photo Credits
 With Thanks to
 DC - Darren Cooke.
 DP - David Pullen
 IC - Ivan Cane,
 NL - Nigel Long,
 RS - Roger Sexton
 SG - Spencer
 Greystrong,

Bacton Wood (NW&DC)